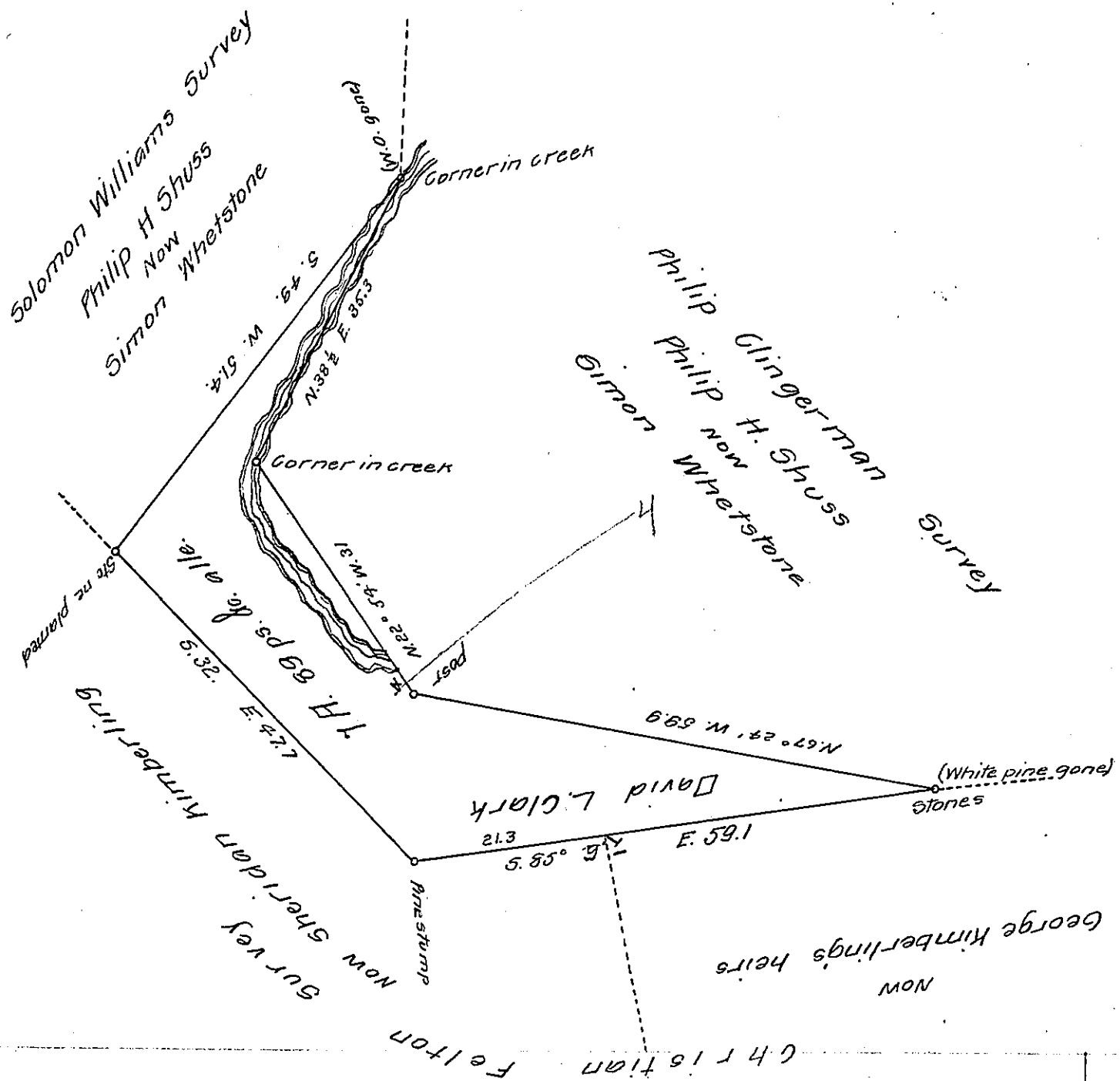


FORM No. 1.



A Draft of a tract of land situated in the Township of West Providence and County of Bedford, containing seven acres, Eighty nine perches and allowance of six percent. for roads etc. Surveyed the 18th day of December 1899, in pursuance of a warrant granted to Philip H. Shuss dated the 10th day of November 1898.

Lewis Pittman
County Surveyor

To James W. Latta, Esq.,
Secretary of Internal Affairs

Note: - This survey made and returned for David L. Clark who purchased the Philip H. Shuss warrant after the death of the said P. H. Shuss

Lewis Pittman C.S.

IN TESTIMONY that the above is a copy of the original remaining on file in the Department of Internal Affairs of Pennsylvania, made conformably to an Act of Assembly approved the 16th day of February 1833, I have hereunto set my hand and caused the Seal of said Department to be affixed at Harrisburg, this nineteenth day of October 1907

Henry Howell
Secretary of Internal Affairs.